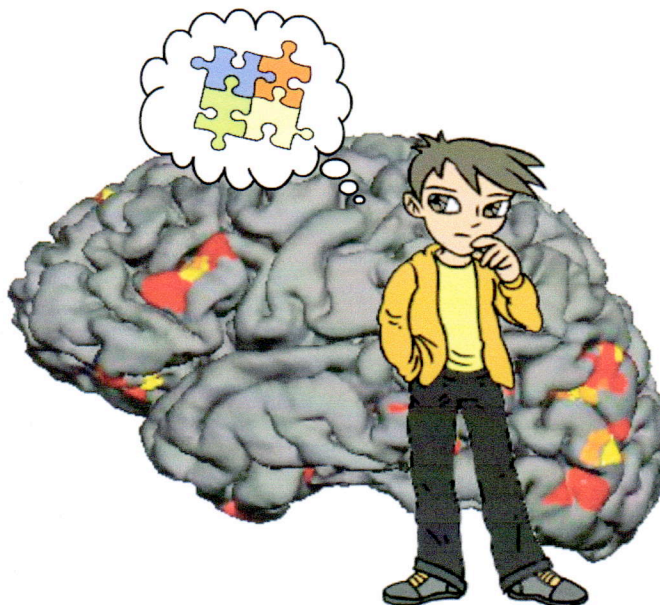


**11-17 years of age**  
**fMRI study: pictorial problem solving**



Participants should have:

- a diagnosis of autism
- normal hearing
- no history of neurological condition (for example: seizures, brain injury)

Duration: 2 hours

Reimbursement: \$50

For more information please contact:

**cherif@nmr.mgh.harvard.edu**

or

**Principal Investigator:**

**Maria Mody, Ph.D.**

**617-726-6913**

**maria@nmr.mgh.harvard.edu**

APPROVED

MAY 21 2008

HUMAN RESEARCH COMMITTEE

[illegible]