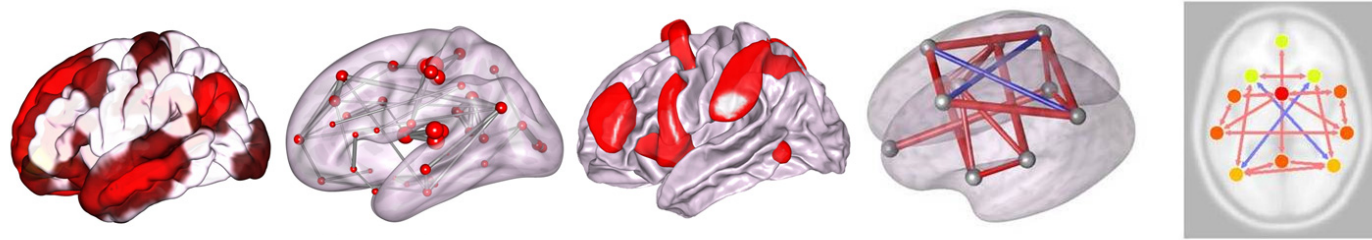




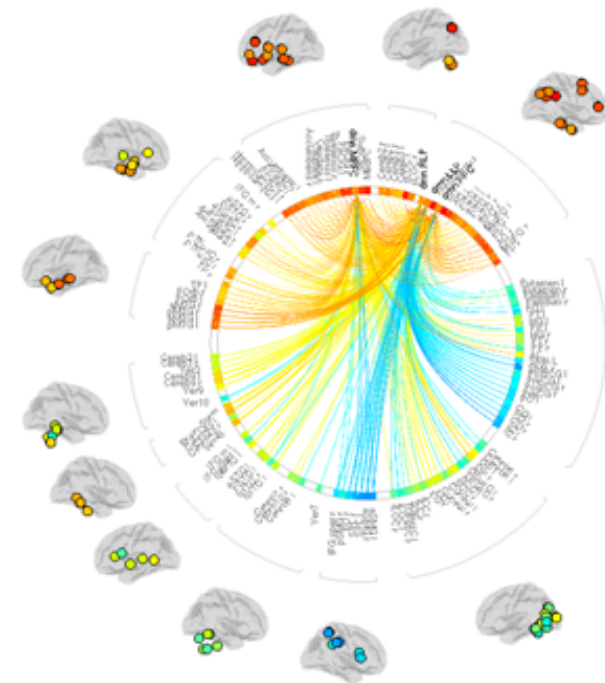
HST.583

Fall 2015

Functional Magnetic Resonance Imaging: Data Acquisition and Analysis



- ▶ Study cutting-edge methods for mapping **human brain function, structure, and connectivity** with the group that pioneered them
- ▶ Introduction to brain anatomy and vascular physiology, MRI physics, fMRI data analysis
- ▶ Special topic seminars on brain networks, neurovascular coupling, big data analysis, and more
- ▶ Hands-on lab sessions and data collection on the MRI scanners used by the Human Connectome Project



Mon 12:30-2:00pm & 3:00-4:00pm, **Wed** 2:00-4:00pm

Course directors: Sue Whitfield-Gabrieli (MIT), Jon Polimeni (MGH), Anastasia Yendiki (MGH)